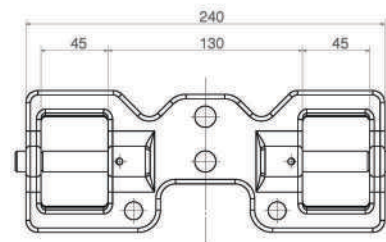
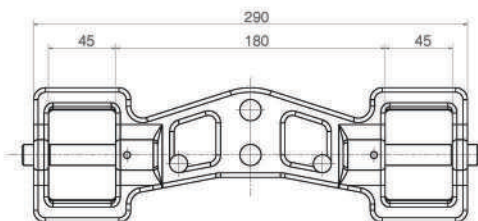
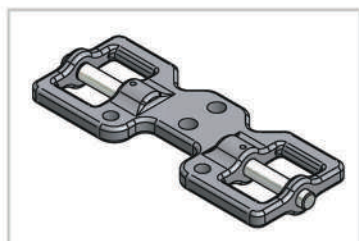
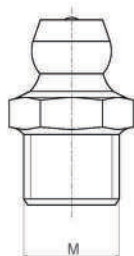
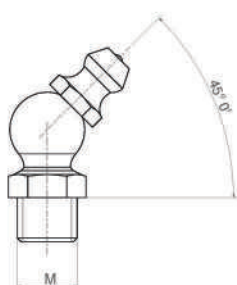




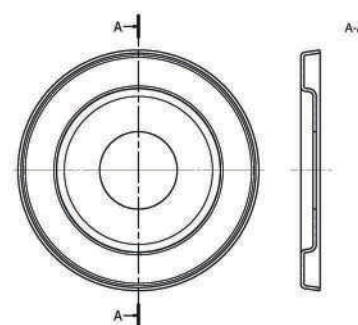
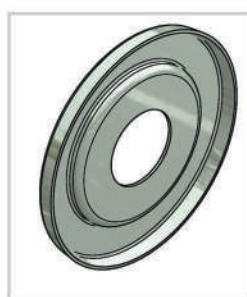
Bilancino _ Compensator



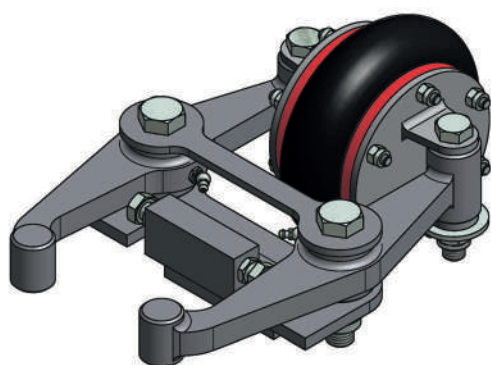
Ingrassatore _ Grease nipple



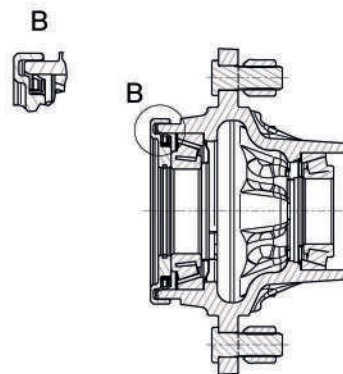
Tenuta parafango _ Mud guard



Correttore di sterzata _ Steering corrector



Tenute con paraterra _ Seals with dust cover



Targhetta identificativa _ Identification plate

PORTATA (kg)
Capacity (kg)



25 KM/H	12500	14000	10500
40 KM/H	11000	12000	10000
60 KM/H	10000	11000	9000

A13010898406I001
V-1301225

TUEV-40 36101515
UTAC-25 13/09283

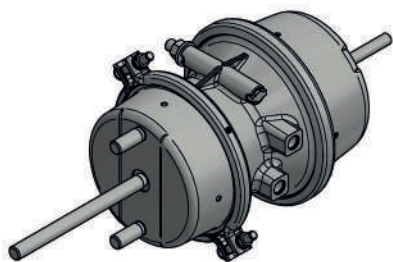
ECE-R13 ID1-A406I ID2-406I ID3-8829 ID4-36104413
2015/68-30
2015/68-40 ID1-A406I ID2-406I ID3-9810 ID4-36108116

CODICE TVZ
TVZ code

LOTTO DI PRODUZIONE
Production lot

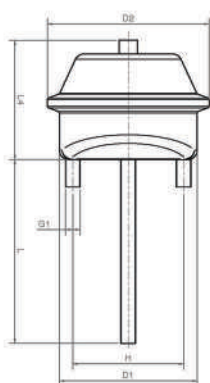
VERBALI FRENO
Brake test reports

Bielementi frenanti _ Spring brakes actuators



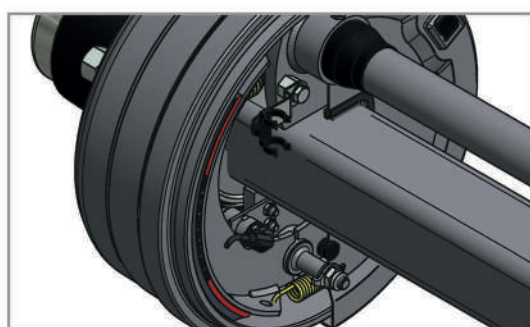
CODICE Code	SERVIZIO - Service		PARCHEGGIO - Parking	
	TIPO Type	CORSA / Stroke (mm)	TIPO Type	CORSA / Stroke (mm)
TS1624	16"	75	24"	75
TS2024	20"	64	24"	64
TS2030	20"	75	30"	75
TS2424	24"	64	24"	64
TS2430	24"	75	30"	75
TS3030	30"	64	30"	64

Brake chambers e supporti _ Brake chambers and supports



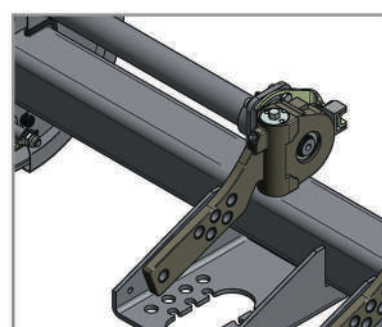
CODICE Code	DATI TECNICI - Technical data						
	TIPO Type	D1 (mm)	D2 (mm)	G1 (mm)	H (mm)	L4 (mm)	L (mm)
BC09	9"	114	133	M12x1,75	76,2	110	185
BC12	12"	121	145	M12x1,75	76,2	120	200
BC16	16"	138	163	M12x1,75	76,2	130	200
BC20	20"	150	176	M16x1,5	120,7	130	200
BC24	24"	161	185	M16x1,5	120,7	130	200
BC30	30"	182	208	M16x1,5	120,7	140	200

Sensore ABS e leve automatiche _ ABS sensor and automatic slack adjusters



I freni omologati ECE-R13 sono disponibili leve freno autoregistranti e anche con sensore ABS.

The brakes approved ECE-R13 are available with automatic slack adjusters and also with ABS sensor.



Altre opzioni disponibili _ Other options available

- Cavallino - *Camber*
- Verniciatura antiruggine - *Antirust paint*
- Verniciatura di finitura - *Finishing paint*

**Per altre opzioni prego contattare il nostro ufficio commerciale
For other options please take contact with our sales office**

I vantaggi di una regolazione della pressione degli pneumatici

- Consumo di carburante ridotto in campo e su strada
- Ridotta resistenza al rotolamento in campo e su strada
- Maggiore stabilità di marcia su strada a velocità più elevate
- Riduzione della profondità della traccia permessa dalla maggiore impronta dello pneumatico
- Forte aumento della forza di traino dovuto al miglior incastro del profilo dello pneumatico con il terreno
- Nessuna/ridotta compattazione del suolo
- Minore usura degli pneumatici

The advantages of an adjusted Tyre Pressure

- *Reduced fuel consumption in the field and on the road*
- *Reduced rolling resistance in the field and on the road*
- *Higher ride stability on the road at higher speeds*
- *Reduction of track depth allowed through bigger footprint of the tyre*
- *Strong increase of towing force due to better interlocking of the tyre profile with the ground*
- *None/reduced soil compaction*
- *Less tyre wear*

